

Courtesy Of Chris Mooney Of Greater Property Group

## \$299,000 - 5745 189 Street, Edmonton

MLS® #E4427922

**\$299,000**

2 Bedroom, 1.00 Bathroom, 954 sqft

Condo / Townhouse on 0.00 Acres

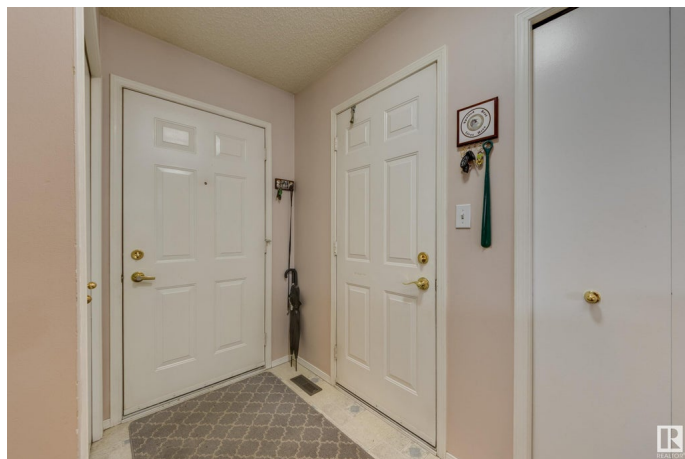
Jamieson Place, Edmonton, AB

Spacious and well-appointed unit close to everything! Don't miss this opportunity to own a 45+ unit with two large bedrooms. Emerge from the oversized single garage to the warm decor, open kitchen and welcoming concrete patio off the large living area. The open, unfinished and full basement presents an opportunity to generate even more value than that being offered by the low list price. Getting around the City is a snap with the Henday just two minutes away and there is literally nothing you will need that isn't 5 minutes away. For value, convenience and comfort, you will not find a better unit in this area.

Built in 1988

### Essential Information

|                |                   |
|----------------|-------------------|
| MLS® #         | E4427922          |
| Price          | \$299,000         |
| Bedrooms       | 2                 |
| Bathrooms      | 1.00              |
| Full Baths     | 1                 |
| Square Footage | 954               |
| Acres          | 0.00              |
| Year Built     | 1988              |
| Type           | Condo / Townhouse |
| Sub-Type       | Half Duplex       |
| Style          | Bungalow          |



Status Active

### Community Information

Address 5745 189 Street  
Area Edmonton  
Subdivision Jamieson Place  
City Edmonton  
County ALBERTA  
Province AB  
Postal Code T6M 2G8

### Amenities

Amenities Detectors Smoke, Hot Water Natural Gas, Parking-Visitor, Patio  
Parking Spaces 2  
Parking Single Garage Attached

### Interior

Appliances Dishwasher-Built-In, Dryer, Garage Control, Garage Opener, Microwave Hood Fan, Refrigerator, Stove-Electric, Washer, Window Coverings  
Heating Forced Air-1, Natural Gas  
Stories 1  
Has Basement Yes  
Basement Full, Unfinished

### Exterior

Exterior Wood, Stucco  
Exterior Features Cul-De-Sac, Golf Nearby, Landscaped, No Through Road, Playground Nearby, Shopping Nearby  
Roof Asphalt Shingles  
Construction Wood, Stucco  
Foundation Concrete Perimeter

### Additional Information

Date Listed March 28th, 2025  
Days on Market 6  
Zoning Zone 20  
Condo Fee \$397

DATA IS DEEMED RELIABLE BUT IS NOT GUARANTEED ACCURATE BY THE REALTORS® ASSOCIATION OF EDMONTON. COPYRIGHT 2025 BY THE REALTORS® ASSOCIATION OF EDMONTON. ALL RIGHTS RESERVED. Trademarks are owned or controlled by the Canadian Real Estate Association (CREA) and identify real

estate professionals who are members of CREA (REALTOR®®, REALTORS®®) and/or the quality of services they provide (MLS®®, Multiple Listing Service®®)

Listing information last updated on April 3rd, 2025 at 7:32pm MDT