

# \$549,800 - 19740 28 Avenue, Edmonton

MLS® #E4427223

**\$549,800**

3 Bedroom, 2.50 Bathroom, 1,703 sqft  
Single Family on 0.00 Acres

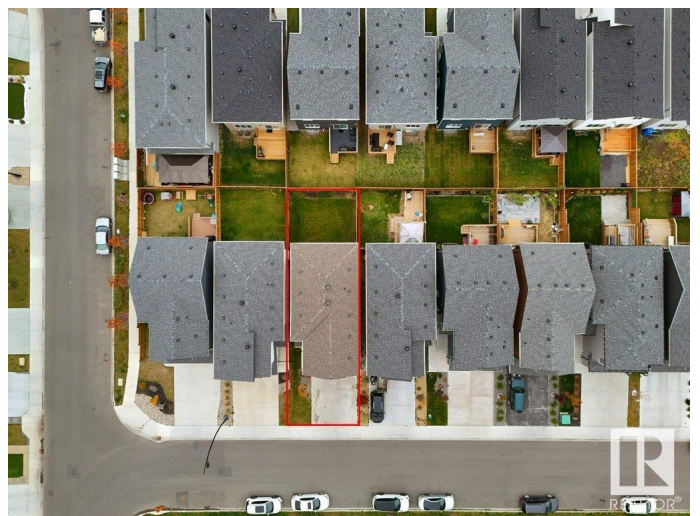
The Uplands, Edmonton, AB

Beautiful 2-storey home nestled in the Heart of your favorite community in West Edmonton - THE UPLANDS!! Upon entrance you will find two double door closets, POWDER WASHROOM ON THE MAIN FLOOR, Mud room with another closet. Huge L-Shape Kitchen is equipped with STAINLESS STEEL appliances, GAS STOVE, QUARTZ COUNTERTOPS, EXTENDED KITCHEN WITH WINE RACKS and a pantry. A CUSTOM FIREPLACE FEATURE WALL in living room and a DINING NOOK opens up to a deck with a FULLY FENCED AND LANDSCAPED BACKYARD. Upstairs you'll find a MASTER BEDROOM WITH 4-PIECE ENSUITE BATHROOM, 2 Secondary bedrooms with a 3-piece common bath with a HUGE BONUS ROOM WITH A WINDOW bringing TONS OF NATURAL LIGHT and laundry. UPGRADED finishings include MDF SHELVING(no wire racks!), SEPARATE ENTRANCE TO THE BASEMENT IS PROVIDED for future LEGAL SUITE, upgraded LIGHT fixtures, and much more! PRICED TO SELL.

Built in 2021

## Essential Information

|        |           |
|--------|-----------|
| MLS® # | E4427223  |
| Price  | \$549,800 |



|                |                        |
|----------------|------------------------|
| Bedrooms       | 3                      |
| Bathrooms      | 2.50                   |
| Full Baths     | 2                      |
| Half Baths     | 1                      |
| Square Footage | 1,703                  |
| Acres          | 0.00                   |
| Year Built     | 2021                   |
| Type           | Single Family          |
| Sub-Type       | Detached Single Family |
| Style          | 2 Storey               |
| Status         | Active                 |

### **Community Information**

|             |                 |
|-------------|-----------------|
| Address     | 19740 28 Avenue |
| Area        | Edmonton        |
| Subdivision | The Uplands     |
| City        | Edmonton        |
| County      | ALBERTA         |
| Province    | AB              |
| Postal Code | T6M 1M1         |

### **Amenities**

|           |                                                                              |
|-----------|------------------------------------------------------------------------------|
| Amenities | Ceiling 9 ft., Detectors Smoke, No Animal Home, No Smoking Home, See Remarks |
| Parking   | Double Garage Attached                                                       |

### **Interior**

|                   |                                                            |
|-------------------|------------------------------------------------------------|
| Interior Features | ensuite bathroom                                           |
| Appliances        | Dryer, Microwave Hood Fan, Refrigerator, Stove-Gas, Washer |
| Heating           | Forced Air-1, Natural Gas                                  |
| Stories           | 2                                                          |
| Has Basement      | Yes                                                        |
| Basement          | Full, Unfinished                                           |

### **Exterior**

|                   |                                                                                        |
|-------------------|----------------------------------------------------------------------------------------|
| Exterior          | Wood, Vinyl                                                                            |
| Exterior Features | Airport Nearby, Playground Nearby, Public Transportation, Shopping Nearby, See Remarks |
| Roof              | Asphalt Shingles                                                                       |

Construction Wood, Vinyl  
Foundation Concrete Perimeter

### **Additional Information**

Date Listed March 24th, 2025  
Days on Market 11  
Zoning Zone 57

DATA IS DEEMED RELIABLE BUT IS NOT GUARANTEED ACCURATE BY THE REALTORS® ASSOCIATION OF EDMONTON. COPYRIGHT 2025 BY THE REALTORS® ASSOCIATION OF EDMONTON. ALL RIGHTS RESERVED. Trademarks are owned or controlled by the Canadian Real Estate Association (CREA) and identify real estate professionals who are members of CREA (REALTOR®, REALTORS®) and/or the quality of services they provide (MLS®, Multiple Listing Service®)

Listing information last updated on April 4th, 2025 at 1:17pm MDT