

Courtesy Of Cassie Weber Of Century 21 Masters

# \$814,900 - 7090 Kiviaq Crescent, Edmonton

MLS® #E4425807

**\$814,900**

3 Bedroom, 3.00 Bathroom, 2,648 sqft

Single Family on 0.00 Acres

Keswick Area, Edmonton, AB

Introducing Vita Homes' latest masterpiece in Keswickâ€” Veneto III. A brand new 2-story home that epitomizes craftsmanship and meticulous attention to detail. Step inside and be captivated by the open-concept floor plan, starting with a versatile office/bdrm that seamlessly leads you to the heart of the home: the immaculate chef's kitchen accompanied by a beautiful walkthrough spice kitchen & pantry. This space is a culinary dream, a built-in bar area, and an expansive layout w/ 9 FT ceilings & 8 FT doors. The kitchen flows effortlessly into the living room, where the stunning "open to below" design creates a breathtaking statement. Upstairs, you'll find a spacious bonus room, 2 bdrms, a convenient laundry room, and the luxurious primary suite. The primary suite is a true retreat, offering a spa-like ensuite, dual vanity, freestanding tub that connects to a generous WI closet. Head into your additional sunken upstairs rec room & bar servery, accented w/ vaulted ceilings, an ideal space for entertainment!

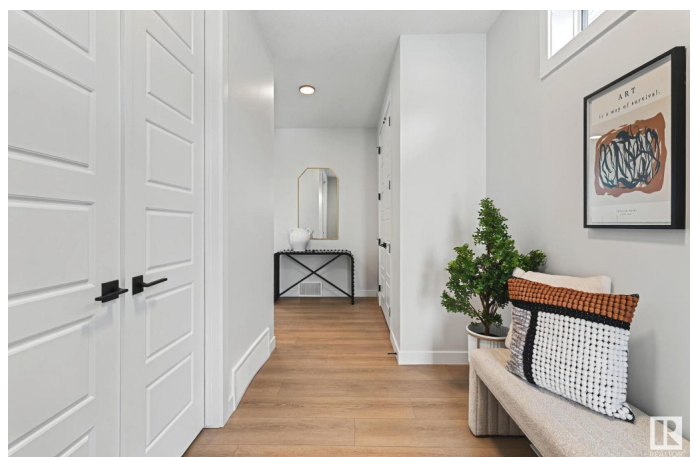
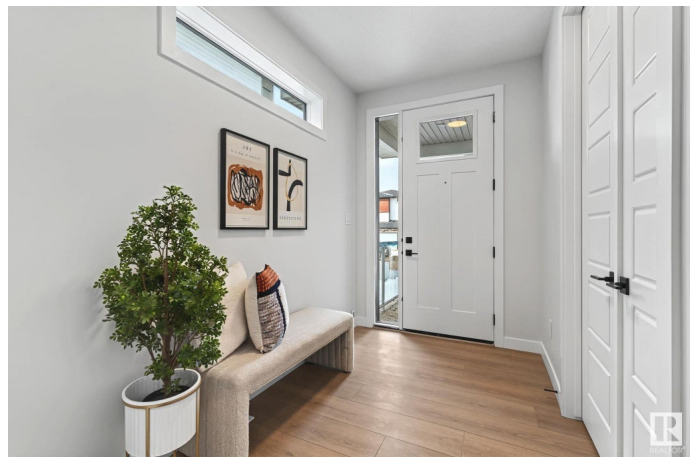
Built in 2024

## Essential Information

MLS® # E4425807

Price \$814,900

Bedrooms 3



Bathrooms	3.00
Full Baths	3
Square Footage	2,648
Acres	0.00
Year Built	2024
Type	Single Family
Sub-Type	Detached Single Family
Style	2 Storey
Status	Active

### **Community Information**

Address	7090 Kiviaq Crescent
Area	Edmonton
Subdivision	Keswick Area
City	Edmonton
County	ALBERTA
Province	AB
Postal Code	T6W 5N7

### **Amenities**

Amenities	Ceiling 9 ft., Deck, No Animal Home, No Smoking Home, Parking-Extra, Parking-Visitor, Vaulted Ceiling, See Remarks
Parking	Double Garage Attached

### **Interior**

Interior Features	ensuite bathroom
Appliances	See Remarks
Heating	Forced Air-1, Natural Gas
Stories	2
Has Basement	Yes
Basement	Full, Unfinished

### **Exterior**

Exterior	Wood, Stone, Vinyl
Exterior Features	Airport Nearby, Golf Nearby, Playground Nearby, Schools, Shopping Nearby, See Remarks
Roof	Asphalt Shingles
Construction	Wood, Stone, Vinyl
Foundation	Concrete Perimeter

## Additional Information

Date Listed March 14th, 2025

Days on Market 21

Zoning Zone 56

DATA IS DEEMED RELIABLE BUT IS NOT GUARANTEED ACCURATE BY THE REALTORS® ASSOCIATION OF EDMONTON. COPYRIGHT 2025 BY THE REALTORS® ASSOCIATION OF EDMONTON. ALL RIGHTS RESERVED. Trademarks are owned or controlled by the Canadian Real Estate Association (CREA) and identify real estate professionals who are members of CREA (REALTOR®, REALTORS®) and/or the quality of services they provide (MLS®, Multiple Listing Service®)

Listing information last updated on April 4th, 2025 at 3:02pm MDT