

\$399,999 - 1624 65 Street, Edmonton

MLS® #E4425630

\$399,999

3 Bedroom, 2.50 Bathroom, 1,314 sqft
Single Family on 0.00 Acres

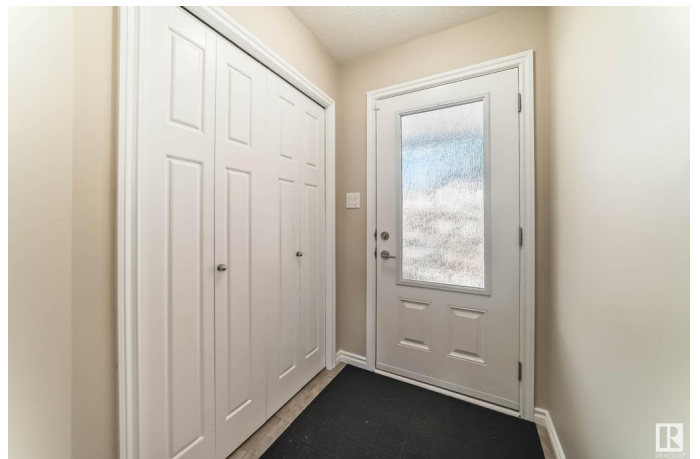
Walker, Edmonton, AB

This beautifully designed 2-storey walk-out half-duplex in the vibrant community of Walker Lake offers 1,314 sq. ft. of living space. The main floor features a functional layout, including a well-equipped kitchen with an eating area. The open-concept design seamlessly flows into the spacious living room and dining area, perfect for entertaining guests. A convenient 2-pc bathroom completes the main level. Upstairs, you'll discover three generously sized bedrooms, including a primary suite with a walk-in closet and a 4-pc ensuite for added comfort. The other two bedrooms share a 4-pc bathroom. Outside, the fenced backyard provides a private retreat with a deck, ideal for relaxing or hosting outdoor gatherings. The unfinished walk-out basement offers plenty of potential for customization. Located near key amenities like the schools, playgrounds, bus stops, and grocery stores, this home perfectly blends comfort and convenience. Don't miss this amazing opportunity!

Built in 2010

Essential Information

MLS® #	E4425630
Price	\$399,999
Bedrooms	3



Bathrooms	2.50
Full Baths	2
Half Baths	1
Square Footage	1,314
Acres	0.00
Year Built	2010
Type	Single Family
Sub-Type	Half Duplex
Style	2 Storey
Status	Active

Community Information

Address	1624 65 Street
Area	Edmonton
Subdivision	Walker
City	Edmonton
County	ALBERTA
Province	AB
Postal Code	T6X 0N1

Amenities

Amenities	Carbon Monoxide Detectors, Deck, Detectors Smoke, Hot Water Electric, No Animal Home, No Smoking Home, Walkout Basement, See Remarks, HRV System
Parking	Insulated, Single Garage Attached

Interior

Interior Features	ensuite bathroom
Appliances	Dishwasher-Built-In, Dryer, Garage Control, Garage Opener, Oven-Microwave, Refrigerator, Stove-Electric, Washer, See Remarks
Heating	Forced Air-1, Natural Gas
Stories	2
Has Basement	Yes
Basement	Full, Unfinished

Exterior

Exterior	Wood, Asphalt, Concrete, Vinyl
Exterior Features	Fenced, Playground Nearby, Public Transportation, Schools, See Remarks

Roof	Asphalt Shingles
Construction	Wood, Asphalt, Concrete, Vinyl
Foundation	Concrete Perimeter

Additional Information

Date Listed March 13th, 2025

Days on Market 1

Zoning Zone 53

DATA IS DEEMED RELIABLE BUT IS NOT GUARANTEED ACCURATE BY THE REALTORS® ASSOCIATION OF EDMONTON. COPYRIGHT 2025 BY THE REALTORS® ASSOCIATION OF EDMONTON. ALL RIGHTS RESERVED. Trademarks are owned or controlled by the Canadian Real Estate Association (CREA) and identify real estate professionals who are members of CREA (REALTOR®, REALTORS®) and/or the quality of services they provide (MLS®, Multiple Listing Service®)

Listing information last updated on March 14th, 2025 at 10:32am MDT