

Courtesy Of Todd R Burke Of RE/MAX River City

# \$309,900 - 101 504 Griesbach Parade Parade, Edmonton

MLS® #E4425128

**\$309,900**

2 Bedroom, 2.00 Bathroom, 1,071 sqft  
Condo / Townhouse on 0.00 Acres

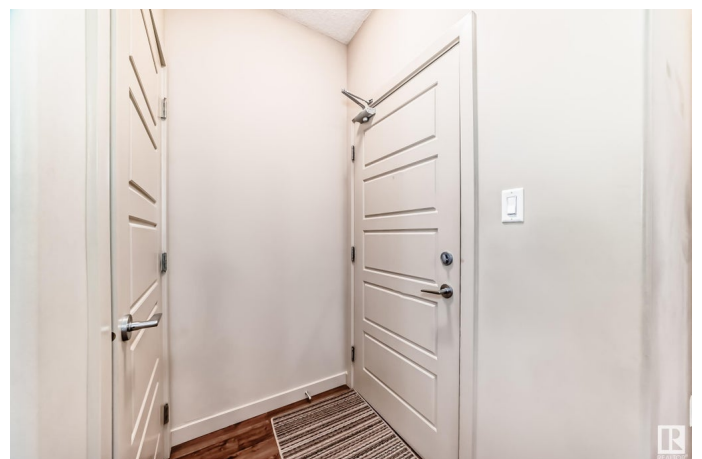
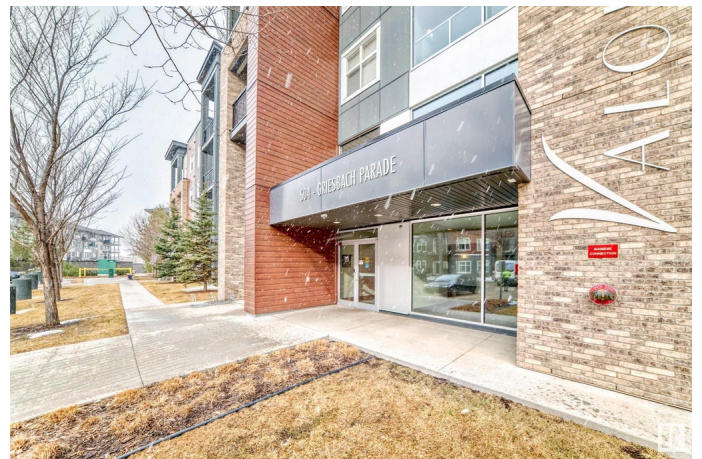
Griesbach, Edmonton, AB

**GORGEOUS!!** This large Corner unit offers 2 bed rooms, a den area and a massive patio with a gate for the convenience of going for a walk, shopping across the street or visitors coming over. Inside you will find an open concept with a huge island kitchen featuring quartz countertops, backsplash, white cabinets and stainless steel appliances overlooking the large living room and dining room. Patio doors to the patio with a gas line for the barbeque. The master bedroom is a generous size with a walk through closet that leads to your very nice ensuite. The second bedroom is a good size as well. The main bath is very nice and there is a den/office space. There is also A.C and a titled underground heated parking stall that is located right beside the elevator. The building is well run with an exercise and social room. The building and home have a great location.

Built in 2016

## Essential Information

|                |           |
|----------------|-----------|
| MLS® #         | E4425128  |
| Price          | \$309,900 |
| Bedrooms       | 2         |
| Bathrooms      | 2.00      |
| Full Baths     | 2         |
| Square Footage | 1,071     |
| Acres          | 0.00      |



|            |                        |
|------------|------------------------|
| Year Built | 2016                   |
| Type       | Condo / Townhouse      |
| Sub-Type   | Lowrise Apartment      |
| Style      | Single Level Apartment |
| Status     | Active                 |

### **Community Information**

|             |                                 |
|-------------|---------------------------------|
| Address     | 101 504 Griesbach Parade Parade |
| Area        | Edmonton                        |
| Subdivision | Griesbach                       |
| City        | Edmonton                        |
| County      | ALBERTA                         |
| Province    | AB                              |
| Postal Code | T5E 6V9                         |

### **Amenities**

|           |  |
|-----------|--|
| Amenities | Off Street Parking, Air Conditioner, Deck, Detectors Smoke, No Animal Home, No Smoking Home, Parking-Extra, Parking-Visitor, Party Room, Patio, Secured Parking, Social Rooms, See Remarks, Storage Cage, Natural Gas BBQ Hookup |
|-----------|--|

|         |                          |
|---------|--------------------------|
| Parking | Underground, See Remarks |
|---------|--------------------------|

### **Interior**

|                   |                  |
|-------------------|------------------|
| Interior Features | ensuite bathroom |
|-------------------|------------------|

|            |   |
|------------|---|
| Appliances | Air Conditioning-Central, Dishwasher-Built-In, Microwave Hood Fan, Refrigerator, Stacked Washer/Dryer, Stove-Electric, Window Coverings |
|------------|---|

|         |                        |
|---------|------------------------|
| Heating | Baseboard, Natural Gas |
|---------|------------------------|

|              |   |
|--------------|---|
| # of Stories | 4 |
|--------------|---|

|         |   |
|---------|---|
| Stories | 4 |
|---------|---|

|              |     |
|--------------|-----|
| Has Basement | Yes |
|--------------|-----|

|          |                   |
|----------|-------------------|
| Basement | None, No Basement |
|----------|-------------------|

### **Exterior**

|          |                           |
|----------|---------------------------|
| Exterior | Wood, Brick, Fiber Cement |
|----------|---------------------------|

|                   |   |
|-------------------|---|
| Exterior Features | Playground Nearby, Public Transportation, Schools, Shopping Nearby, See Remarks |
|-------------------|---|

|      |                  |
|------|------------------|
| Roof | Asphalt Shingles |
|------|------------------|

|              |                           |
|--------------|---------------------------|
| Construction | Wood, Brick, Fiber Cement |
|--------------|---------------------------|

|            |                    |
|------------|--------------------|
| Foundation | Concrete Perimeter |
|------------|--------------------|

## Additional Information

|                |                  |
|----------------|------------------|
| Date Listed    | March 11th, 2025 |
| Days on Market | 25               |
| Zoning         | Zone 27          |
| Condo Fee      | \$549            |

DATA IS DEEMED RELIABLE BUT IS NOT GUARANTEED ACCURATE BY THE REALTORS® ASSOCIATION OF EDMONTON. COPYRIGHT 2025 BY THE REALTORS® ASSOCIATION OF EDMONTON. ALL RIGHTS RESERVED. Trademarks are owned or controlled by the Canadian Real Estate Association (CREA) and identify real estate professionals who are members of CREA (REALTOR®, REALTORS®) and/or the quality of services they provide (MLS®, Multiple Listing Service®)

Listing information last updated on April 5th, 2025 at 5:32pm MDT