

## \$476,500 - 17924 98a Avenue, Edmonton

MLS® #E4425013

### \$476,500

3 Bedroom, 2.00 Bathroom, 1,313 sqft  
Single Family on 0.00 Acres

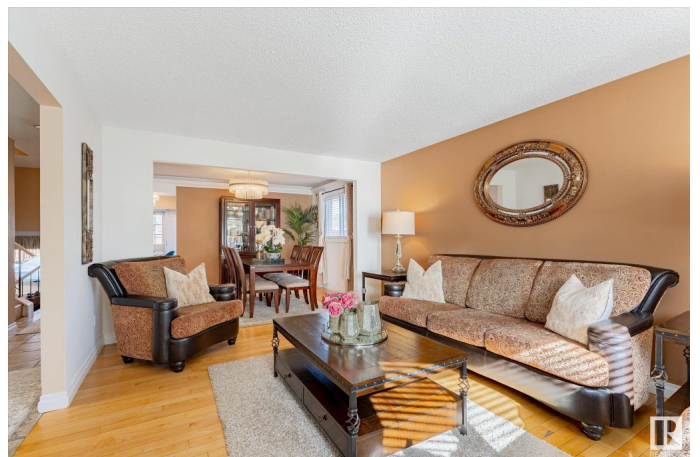
La Perle, Edmonton, AB

Upgraded and beautifully decorated west end home. Over 1800 sq.ft. of finished living space. This 3 bedroom home offers modern decorating maple hardwood and tile floors, high-end lighting, upgraded molding and trims. Main level contains large and bright living room, formal dining room and upgraded open eat-in kitchen. The kitchen overlooks a large family room with wood burning fireplace, the laundry room is on the same level. Upstairs is the master suite (with an ensuite bathroom and walk-in closet) . Two additional comfortable bedrooms, all with hardwood floors. The basement is fully finished with a large rumpus room and a hobby room/ den/ office. The garage is insulated. The upgrades over 5 yrs in this house are the roof, furnace, hot water tank, doors and many windows. Minutes from shopping , schools and transportation. Huge beautifully landscaped backyard with gigantic maintenance free composite deck. This home is waiting to be yours.

Built in 1981

### Essential Information

MLS® #	E4425013
Price	\$476,500
Bedrooms	3



Bathrooms	2.00
Full Baths	2
Square Footage	1,313
Acres	0.00
Year Built	1981
Type	Single Family
Sub-Type	Detached Single Family
Style	4 Level Split
Status	Active

### **Community Information**

Address	17924 98a Avenue
Area	Edmonton
Subdivision	La Perle
City	Edmonton
County	ALBERTA
Province	AB
Postal Code	T5T 3P4

### **Amenities**

Amenities	Deck, Detectors Smoke, See Remarks
Parking Spaces	4
Parking	Double Garage Attached

### **Interior**

Interior Features	ensuite bathroom
Appliances	Dishwasher-Built-In, Dryer, Garage Control, Garage Opener, Microwave Hood Fan, Refrigerator, Stove-Electric, Washer
Heating	Forced Air-1, Natural Gas
Stories	4
Has Basement	Yes
Basement	Full, Finished

### **Exterior**

Exterior	Wood, Fiber Cement, Stone
Exterior Features	Fenced, Playground Nearby, Public Transportation, Schools, Shopping Nearby, See Remarks
Roof	Asphalt Shingles
Construction	Wood, Fiber Cement, Stone

Foundation            Concrete Perimeter

### **Additional Information**

Date Listed            March 10th, 2025

Days on Market      25

Zoning                 Zone 20

DATA IS DEEMED RELIABLE BUT IS NOT GUARANTEED ACCURATE BY THE REALTORS® ASSOCIATION OF EDMONTON. COPYRIGHT 2025 BY THE REALTORS® ASSOCIATION OF EDMONTON. ALL RIGHTS RESERVED. Trademarks are owned or controlled by the Canadian Real Estate Association (CREA) and identify real estate professionals who are members of CREA (REALTOR®, REALTORS®) and/or the quality of services they provide (MLS®, Multiple Listing Service®)

Listing information last updated on April 4th, 2025 at 1:02pm MDT