

Courtesy Of Monique N Balie Of Sable Realty

\$789,900 - 16225 32 Avenue, Edmonton

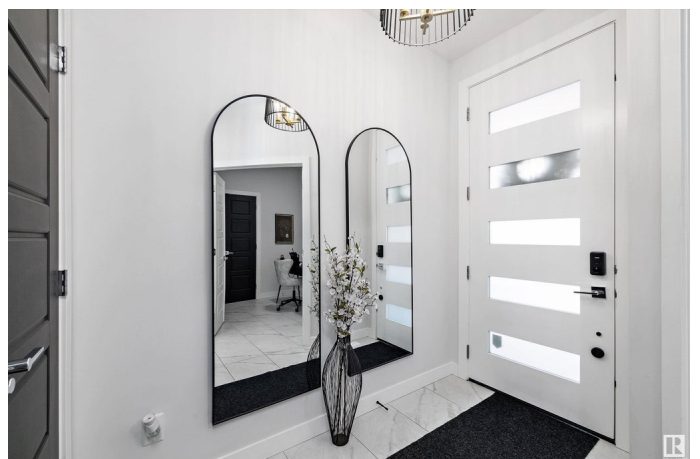
MLS® #E4424511

\$789,900

4 Bedroom, 4.00 Bathroom, 2,155 sqft
Single Family on 0.00 Acres

Glenridding Ravine, Edmonton, AB

Welcome to Elegance! This stylish 4-bedroom home in Ridgecrest is filled with high-end finishes and thoughtful details. The main floor features a bedroom/den, 3-piece bath, and a spacious mudroom connecting to a walk-through pantry with built-in shelving. The gourmet kitchen stuns with sleek black cabinets, gold hardware, black SS appliances, and an extended marble quartz countertop and island. The open dining area offers a breathtaking south-facing pond view. A floor-to-ceiling custom built-out with LED surround & 100â€• fireplace makes the open-to-below living space a showstopper. The glass staircase with step lights leads to a second floor featuring a bonus room, 3 bedroomsâ€• each with a private ensuiteâ€• and a laundry room. The primary suite boasts a built-out w/ LED surround, fireplace, private balcony, 5-piece bath, and custom walk-in closet. Additional highlights: adjustable lighting throughout, garage drain, walkout basement with 9ft ceilings, stamped concrete pad, large deck, and full fencing and more!



Built in 2021

Essential Information

| | |
|--------|-----------|
| MLS® # | E4424511 |
| Price | \$789,900 |

| | |
|----------------|------------------------|
| Bedrooms | 4 |
| Bathrooms | 4.00 |
| Full Baths | 4 |
| Square Footage | 2,155 |
| Acres | 0.00 |
| Year Built | 2021 |
| Type | Single Family |
| Sub-Type | Detached Single Family |
| Style | 2 Storey |
| Status | Active |

Community Information

| | |
|-------------|--------------------|
| Address | 16225 32 Avenue |
| Area | Edmonton |
| Subdivision | Glenridding Ravine |
| City | Edmonton |
| County | ALBERTA |
| Province | AB |
| Postal Code | T6W 4P2 |

Amenities

Amenities Carbon Monoxide Detectors, Ceiling 10 ft., Ceiling 9 ft., Closet Organizers, Deck, Hot Water Tankless, Low Flw/Dual Flush Toilet, No Smoking Home, Patio, Secured Parking, Storage-In-Suite, Walkout Basement, See Remarks, Natural Gas BBQ Hookup, 9 ft. Basement Ceiling

| | |
|----------------|------------------------|
| Parking Spaces | 4 |
| Parking | Double Garage Attached |

Interior

| | |
|-------------------|---|
| Interior Features | ensuite bathroom |
| Appliances | Dishwasher-Built-In, Garage Opener, Hood Fan, Oven-Built-In, Oven-Microwave, Refrigerator, Stacked Washer/Dryer, Stove-Countertop Electric, Window Coverings, See Remarks |
| Heating | Forced Air-1, Natural Gas |
| Fireplace | Yes |
| Fireplaces | Remote Control, Wall Mount, See Remarks |
| Stories | 2 |
| Has Basement | Yes |

Basement Full, Unfinished

Exterior

Exterior Wood, Brick, Vinyl

Exterior Features Airport Nearby, Cul-De-Sac, Fenced, Low Maintenance Landscape, Playground Nearby, Schools, Shopping Nearby, Sloping Lot, Stream/Pond, See Remarks

Roof Asphalt Shingles

Construction Wood, Brick, Vinyl

Foundation Concrete Perimeter

School Information

Elementary Joey Moss

Middle Joey Moss

High Dr. Anne Anderson

Additional Information

Date Listed March 7th, 2025

Days on Market 28

Zoning Zone 56

DATA IS DEEMED RELIABLE BUT IS NOT GUARANTEED ACCURATE BY THE REALTORS® ASSOCIATION OF EDMONTON. COPYRIGHT 2025 BY THE REALTORS® ASSOCIATION OF EDMONTON. ALL RIGHTS RESERVED. Trademarks are owned or controlled by the Canadian Real Estate Association (CREA) and identify real estate professionals who are members of CREA (REALTOR®, REALTORS®) and/or the quality of services they provide (MLS®, Multiple Listing Service®)

Listing information last updated on April 4th, 2025 at 1:17pm MDT