

Courtesy Of Sam Killick and Jakie K Ng Of ARIVL

# \$309,000 - 19 249 Edwards Drive, Edmonton

MLS® #E4421802

**\$309,000**

3 Bedroom, 1.50 Bathroom, 1,140 sqft  
Condo / Townhouse on 0.00 Acres

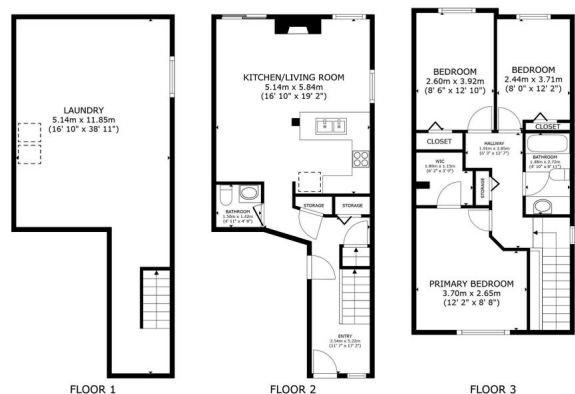
Ellerslie, Edmonton, AB

RENOVATED 3-BED, 1.5-BATH TOWNHOME IN SOUTHEAST EDMONTON WITH ATTACHED GARAGE, BACK PATIO & BRAND-NEW FURNACE! Located in Sandstone Estates (Ellerslie), this home is just 20 mins to U of A & Whyte Ave, 10 mins to South Edmonton Common, 15 mins to the airport, and 25 mins to West Edmonton Mall & Downtownâ€”perfect for students, travelers, shoppers, and city explorers! Featuring a brand-new high-efficiency furnace, open-concept kitchen to living area, updated bathrooms, and an attached garage with extended driveway parking pad, this home offers both comfort and convenience. Stylish upgrades include slate tile flooring, quartz kitchen countertops, flush-mount LED lighting, and fresh paint. Whether you're a first-time buyer or investor looking for a turnkey rental, this home is move-in ready!

Built in 2003

## Essential Information

MLS® #	E4421802
Price	\$309,000
Bedrooms	3
Bathrooms	1.50
Full Baths	1
Half Baths	1



19-249 EDWARDS DRIVE SW  
SANDSTONE ESTATES (ELLERSLIE)  
ELLERSLIE, EDMONTON

GROSS INTERNAL AREA  
FLOOR 1 45.3 HP (188 sq.ft.) FLOOR 2 42.7 HP (160 sq.ft.) FLOOR 3 54.8 HP (243 sq.ft.)  
TOTAL: 142.8 HP (591 sq.ft.)

SIZES AND DIMENSIONS ARE APPROXIMATE, ACTUAL MAY VARY.

Square Footage	1,140
Acres	0.00
Year Built	2003
Type	Condo / Townhouse
Sub-Type	Townhouse
Style	2 Storey
Status	Active

### **Community Information**

Address	19 249 Edwards Drive
Area	Edmonton
Subdivision	Ellerslie
City	Edmonton
County	ALBERTA
Province	AB
Postal Code	T6X 1G2

### **Amenities**

Amenities	Carbon Monoxide Detectors, Detectors Smoke, Parking-Visitor, Vinyl Windows, See Remarks
Parking Spaces	1
Parking	Single Garage Attached

### **Interior**

Appliances	Dishwasher-Built-In, Dryer, Garage Control, Garage Opener, Microwave Hood Fan, Refrigerator, Stove-Electric, Washer
Heating	Forced Air-1, Natural Gas
Fireplace	Yes
Fireplaces	Freestanding
Stories	2
Has Basement	Yes
Basement	Full, Unfinished

### **Exterior**

Exterior	Wood, Stone, Vinyl
Exterior Features	Airport Nearby, Backs Onto Park/Trees, Low Maintenance Landscape, Public Transportation, Schools, Shopping Nearby, See Remarks
Roof	Asphalt Shingles
Construction	Wood, Stone, Vinyl

Foundation Concrete Perimeter

### **School Information**

Elementary Sakaw School  
Middle kisÅªwÅªçtisiwin School  
High J. Percy Page School

### **Additional Information**

Date Listed February 16th, 2025  
Days on Market 26  
Zoning Zone 53  
Condo Fee \$272

DATA IS DEEMED RELIABLE BUT IS NOT GUARANTEED ACCURATE BY THE REALTORS® ASSOCIATION OF EDMONTON. COPYRIGHT 2025 BY THE REALTORS® ASSOCIATION OF EDMONTON. ALL RIGHTS RESERVED. Trademarks are owned or controlled by the Canadian Real Estate Association (CREA) and identify real estate professionals who are members of CREA (REALTOR®, REALTORS®) and/or the quality of services they provide (MLS®, Multiple Listing Service®)

Listing information last updated on March 14th, 2025 at 12:02am MDT