

# \$1,479,900 - 10720-57 Ave, Edmonton

MLS® #E4400943

**\$1,479,900**

3 Bedroom, 2.50 Bathroom, 2,605 sqft

Single Family on 0.00 Acres

Pleasantview (Edmonton), Edmonton, AB

Located in a quiet tree-lined street in the heart of Pleasantview, minutes from the UofA, Southgate Mall and the LRT station. Next door is a park with skating rink, tennis court and basketball courts, playground and more. Step into this architect-designed, engineer-built 2-storey with double attached garage masterpiece, where meticulous craftsmanship meets unrivaled sophistication. This expansive 2,600 sq. ft. retreat boasts a spacious mudroom, gourmet kitchen, and versatile layout, promising both elegance and functionality for modern living. With a vast 37.5 ft. by 145 ft. lot and sheer luxury and elegance throughout, welcome to a realm of opulence and refinement unlike any other. Since this house is not built yet, new owners will be able to customize it to their likings such as colors, finishing, and adjustments to the floor plan.

Built in 2024

## Essential Information

MLS® #	E4400943
Price	\$1,479,900
Bedrooms	3
Bathrooms	2.50
Full Baths	2
Half Baths	1
Square Footage	2,605



Acres 0.00  
Year Built 2024  
Type Single Family  
Sub-Type Detached Single Family  
Style 2 Storey  
Status Active

### Community Information

Address 10720-57 Ave  
Area Edmonton  
Subdivision Pleasantview (Edmonton)  
City Edmonton  
County ALBERTA  
Province AB  
Postal Code T6H 0Y6

### Amenities

Amenities Ceiling 9 ft.  
Parking Double Garage Attached

### Interior

Interior Features ensuite bathroom  
Appliances See Remarks  
Heating Forced Air-1, Natural Gas  
Stories 2  
Has Basement Yes  
Basement Full, See Remarks

### Exterior

Exterior Wood, Stone, Stucco  
Exterior Features Airport Nearby, Flat Site, Playground Nearby, Public Transportation, Schools, Shopping Nearby  
Roof Asphalt Shingles  
Construction Wood, Stone, Stucco  
Foundation Concrete Perimeter

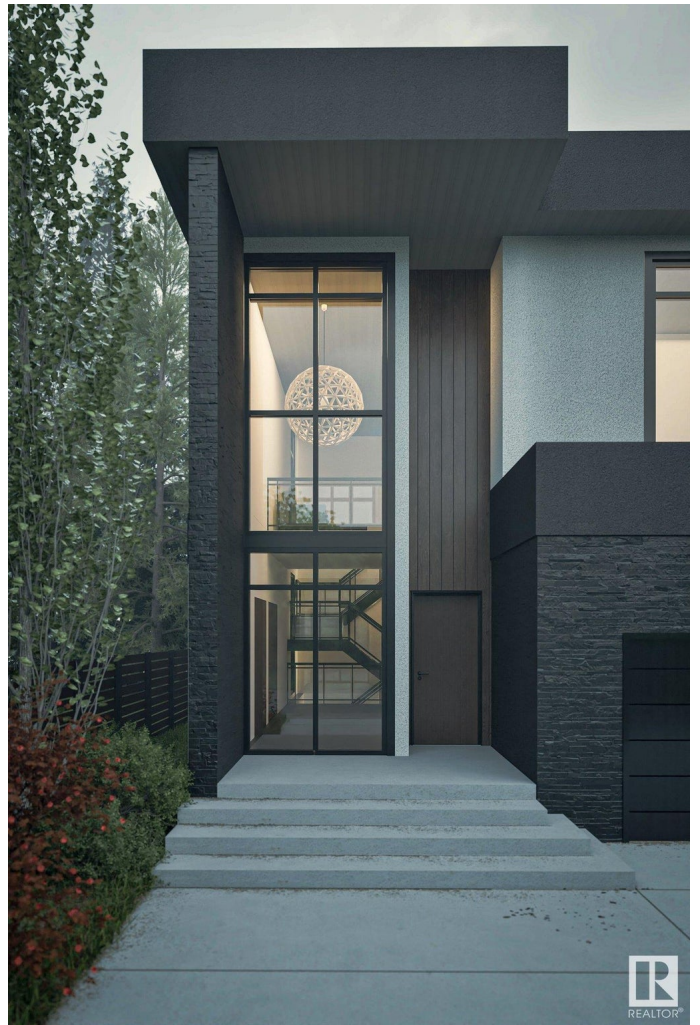
### Additional Information

Date Listed August 7th, 2024  
Days on Market 240



Zoning

Zone 15



DATA IS DEEMED RELIABLE BUT IS NOT GUARANTEED ACCURATE BY THE REALTORS® ASSOCIATION OF EDMONTON. COPYRIGHT 2025 BY THE REALTORS® ASSOCIATION OF EDMONTON. ALL RIGHTS RESERVED. Trademarks are owned or controlled by the Canadian Real Estate Association (CREA) and identify real estate professionals who are members of CREA (REALTOR®, REALTORS®) and/or the quality of services they provide (MLS®, Multiple Listing Service®)

Listing information last updated on April 4th, 2025 at 3:32pm MDT